

PERISTALTIC PUMP

Description:

Transporting the blood to the slaughterhouses is a point with complications if it is not done with the proper equipment. Mecanova offers the best solution for your needs, calculating and configuring the pump that meets the conditions of flow, suction distance, and distant and height of the impulsion of its installation. In addition, our peristaltic pumps are specially designed to work in slaughterhouses, with industrial or food blood, as they meet the challenges of the blood and the slaughterhouses, as they require:

1. That they work permanently, in many cases, in a vacuum
2. High suction power due to viscosity of blood
3. Aspirate and transport easily cleaned blood clots in many cases
4. Durability



Mecanova works with the best European manufacturers of peristaltic pumps

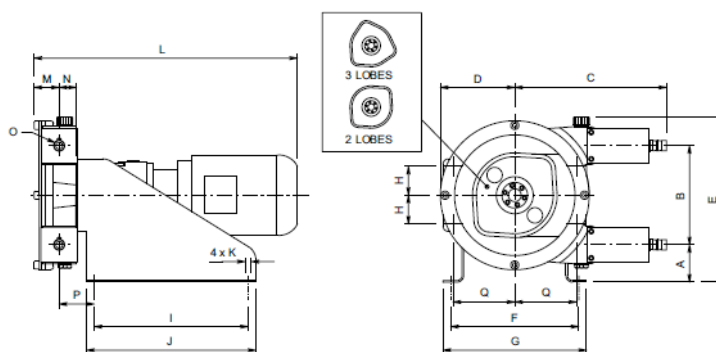
Technical Data

* The technical characteristics may vary depending on the type of pump required

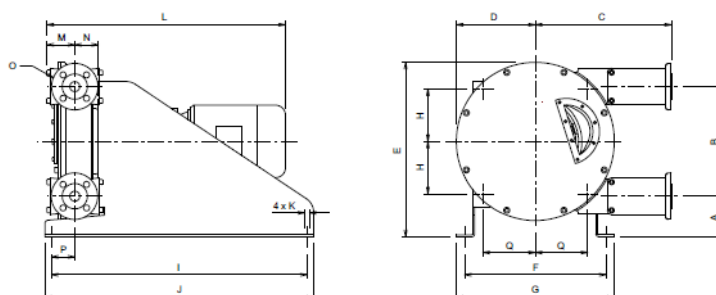
- Pump with 2 pushers
- 1.5 m³ / h @ 25 RPM
- Maximum pressure: 15 bar
- NR, EPDM or NBR rubber tube
- Connection in stainless steel or PP
- Lubricant included (uses 2.5L)
- 1.5 kW gear motor, 220-380V, 50Hz
- Prepared for external frequency inverter (15-80Hz). External drive not included
- Total weight: 145 Kg



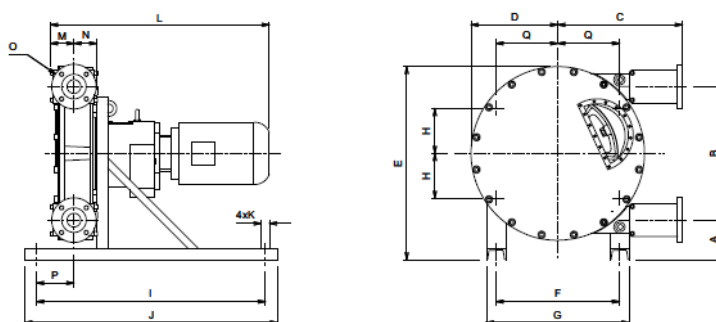
ALH 05 - 20



ALH 25 - 40



ALHX 40 - 125



DIMENSIONES

LAS DIMENSIONES Y DATOS TÉCNICOS ESTÁN SUJETOS A MODIFICACIÓN SIN PREVIO AVISO

TIPO	A	B	C	D	E	F	G	H	I	J	K	L	M	N	O (brida ISO)	P	Q
ALH 05	103,5	115	226	95	256	220	240	33,5	260	280	4xø9	-	46,5	34,5	ø16 *	56	81,25
ALH 10	103,5	115	226	95	256	220	240	33,5	260	280	4xø9	-	46,5	34,5	ø16 *	56	81,25
ALH 15	73	193	296	145	322	250	280	51,75	300	330	4xø13	-	49	35,5	ø20 *	68,8	124,75
ALH 20	73	193	296	145	322	250	280	51,75	300	330	4xø13	-	49	35,5	ø25 *	68,8	124,75
ALH 25	95	262	355,5	190	416	311	351	110	560	600	4xø13	-	65	69	DN25 PN16	61	110
ALH 32	122,5	330	435,5	238	525,5	426	476	157,75	770	810	4xø13	-	83	89	DN32 PN16	109	157,75
ALH 40	122,5	330	435,5	238	525,5	426	476	157,75	770	810	4xø13	-	83	89	DN40 PN16	109	157,75
ALHX 40	110	430	400	291	616	340	420	170	850	950	4xø19	-	75	86	DN40 PN16	87	170
ALH 50	164,5	554	517,5	360	801,5	513	593	186,5	950	1050	4xø19	-	94,5	102	DN50 PN16	152	256,5
ALH 65	164,5	554	517,5	360	801,5	513	593	186,5	950	1050	4xø19	-	94,5	102	DN65 PN16	152	256,5
ALHX 80	154	746	604	473	1004	580	680	290	1150	1250	4xø19	-	129	123	DN80 PN16	117	290
ALH 80	262	876	803	555	1320	690	830	345	1300	1400	4xø27	-	140,5	142	DN80 PN16	210	345
ALH 100	300	1040	887	685	1680	820	960	410	1900	2000	4xø27	-	149	174	DN100 PN16	295	410
ALH 125	263,5	1273	1038	785	1750	1000	1140	500	1900	2000	4xø27	-	300	232	DN125 PN16	660	500

TABLA DE CAUDALES (L/H)

TIPO	10 rpm	20 rpm	40 rpm	60 rpm	80 rpm	100 rpm	120 rpm	140 rpm	
ALH 05 (3 lóbulos)	3.4	6.8	13.6	20.4					Uso continuo (L/h)
ALH10 (3 lóbulos)	10	20	40	60					
ALH 10	15	30	60	90	120	150	180		Uso intermitente (L/h)
ALH 15	50	100	200	300	400	500	600		
ALH 20	65	170	340	500	670	850	970		Uso ocasional (L/h) < 1 hora/día
ALH 25	200	400	800	1 200	1 600	2 000	2 400	2 800	
ALH 32	375	750	1 500	2 250	3 000	3 750	4 500	5 250	
ALH 40	565	1 170	2 340	3 510	4 680	6 850	7 020	8 190	
ALHX 40	800	1 600	3 200	4 800	6 400	8 000			
ALH 50	1750	3 500	7 000	10 500	14 000	17 500			
ALH 65	2300	4 600	9 200	13 800	18 400	23 000			

TIPO	10 rpm	20 rpm	30 rpm	35 rpm	40 rpm	45 rpm	50 rpm
ALHX 80	5 500	11 000	16 500	19 250	22 000	24 750	27 500
ALH 80	7 000	14 000	21 000	24 500	28 000	31 500	35 000
ALH 100	12 000	24 000	36 000	42 000	48 000	54 000	
ALH 125	22 000	44 000	66 000	77 000	88 000		

* The images shown serve as a reference regarding the product. These may have variations compared to the final product.