

STUNNING BOX WITH NECK FIXATION FOR CATTLE

Description:

Machine designed to facilitate the work of cattle stunning. It is an immobilising box made of galvanized steel. The animal comes from the animal pens and door into the entrance door, accompanied by an operator. Once the animal is inside the box, the operator closes the door, so the animals cannot go back. The door is actuated by pneumatic cylinder.

Once the stunning process is complete, the assigned operator opens the side door so the stunned animal can out

All the doors are actuated by an operator by means of an easy-to-use device.

Technical Data:

Frame: Galvanized steel construction

Working pressure: 6 bars

Maximum production: 100 cattle / hour (without ritual process)

40 cattle / hour (with ritual process)

Exclusions:

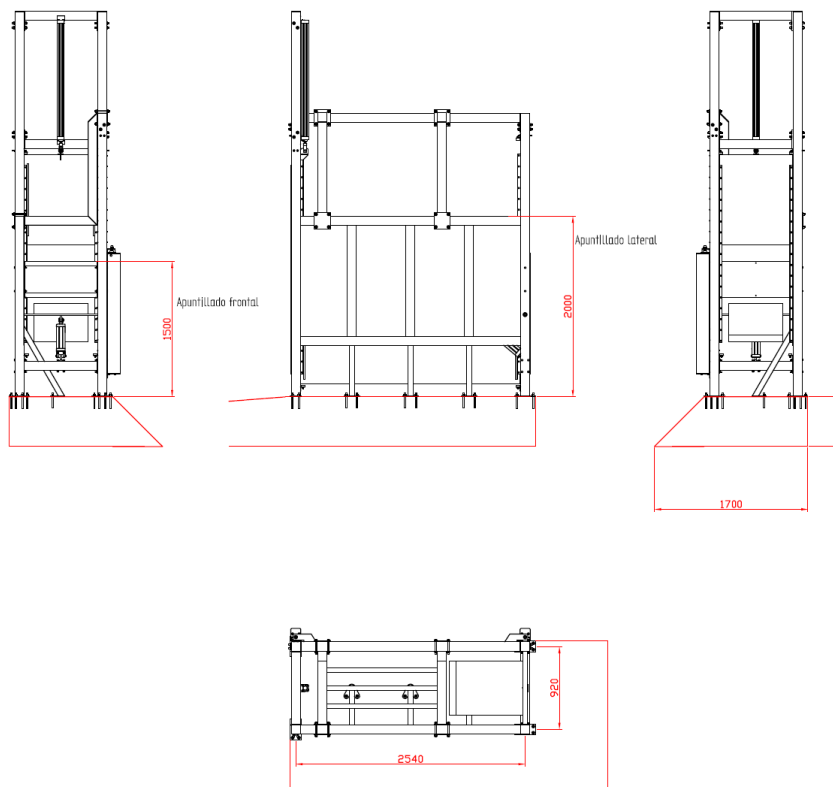
Civil work

Stunning system

Transfer corridor

Demostration Video:

<https://www.mecanova.es/en/products/slaughterhouses/cattle-slaughterhouse/stunning-and-bleeding-cattle/cattle-stunning-box>



NECK FIXATION SYSTEM + SIDE PUSH SYSTEM FOR STUNNING CATTLE BOX

Description:

Head trapping/fixation system for cattle and neck display for cutting by Halal or Kosher ritual, alongside a side push back door.

The animal gets into the box naturally and introduces the head inside. In case of resistance, the operator actuates the side door, which will push the animal and will make it to get the head out the front.

Once the animal has pulled the head out, the guillotine door closes, keeping the animal trapped. In this moment, the neck display goes up, showing the neck for the ritual cut.

Advantages:

- Simple system to adapt to existing drawers that allows to work with or without ritual, the immobilization of the animal prior to desensitization complies with the Animal Welfare Regulations.
- The back side push system is valid for different sizes of animals and makes it difficult for animals to sit.



Technical Data:

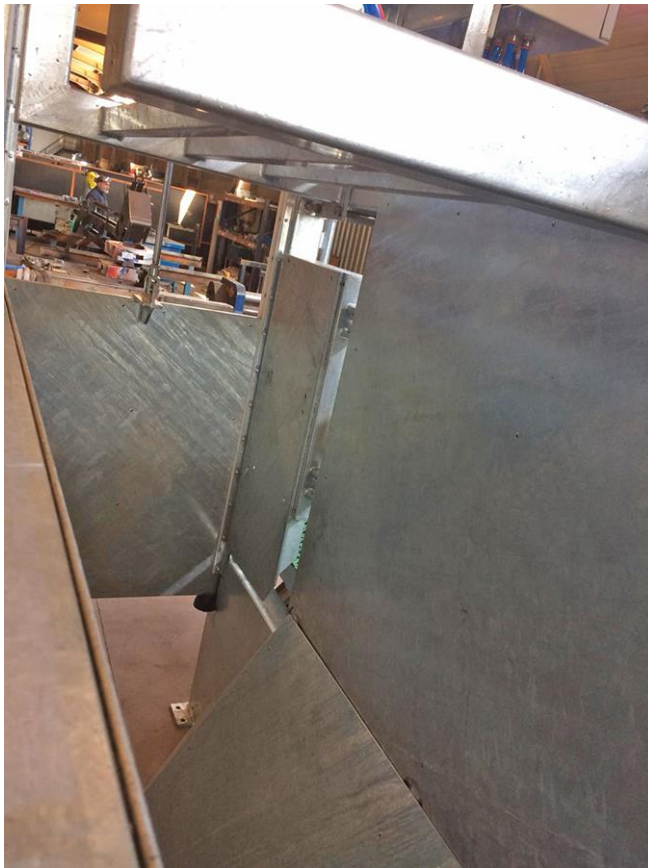
- Made of stainless steel or hot galvanized
- The sliding or guillotine door is made of polyethylene 1000 sheet of 40 mm thick
- Moving elements made of stainless steel
- Neck display in smooth round stainless steel diameter 30 mm
- Actuated by pneumatic cylinders
 - Side thrust: 125 mm diameter cylinder.
 - Neck fixation: 100mm diameter cylinder
 - Sectional door: cylinder diameter 80 mm

Video: head trapped fixation system:

- https://youtu.be/6_mT76PwIQU

Video Push back door:

- <https://youtu.be/RwOB5eSIVpl>



*The images shown serve as a reference regarding the product. These may have variations compared to the final product due to the fact that Mecanova builds on demand