

# FLAT PLATE MONORAIL

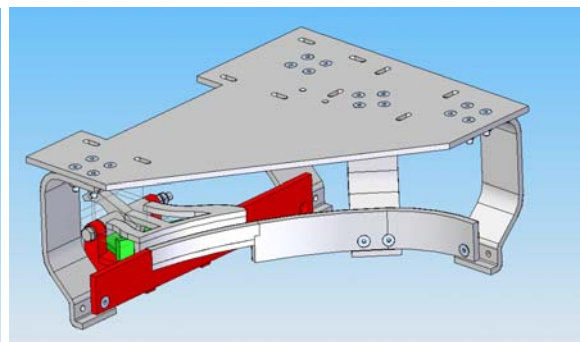
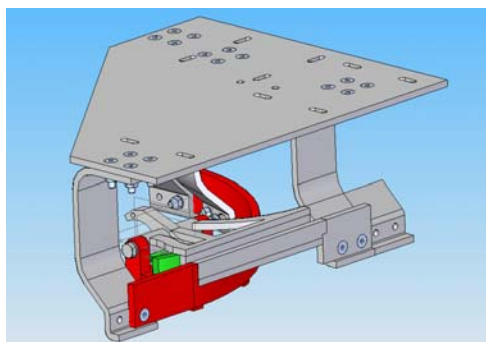
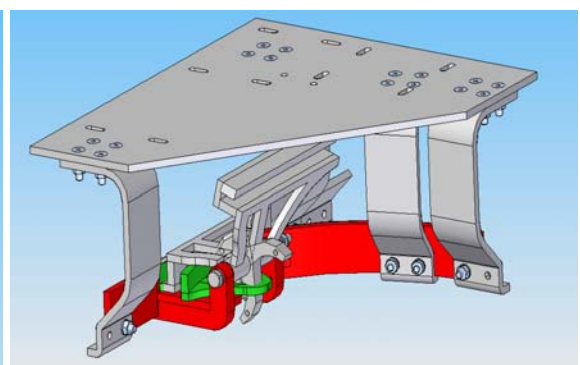
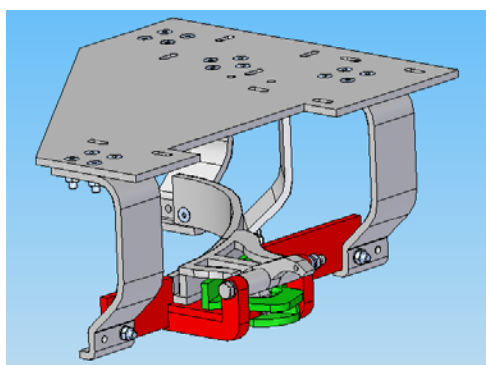
## Technical data:

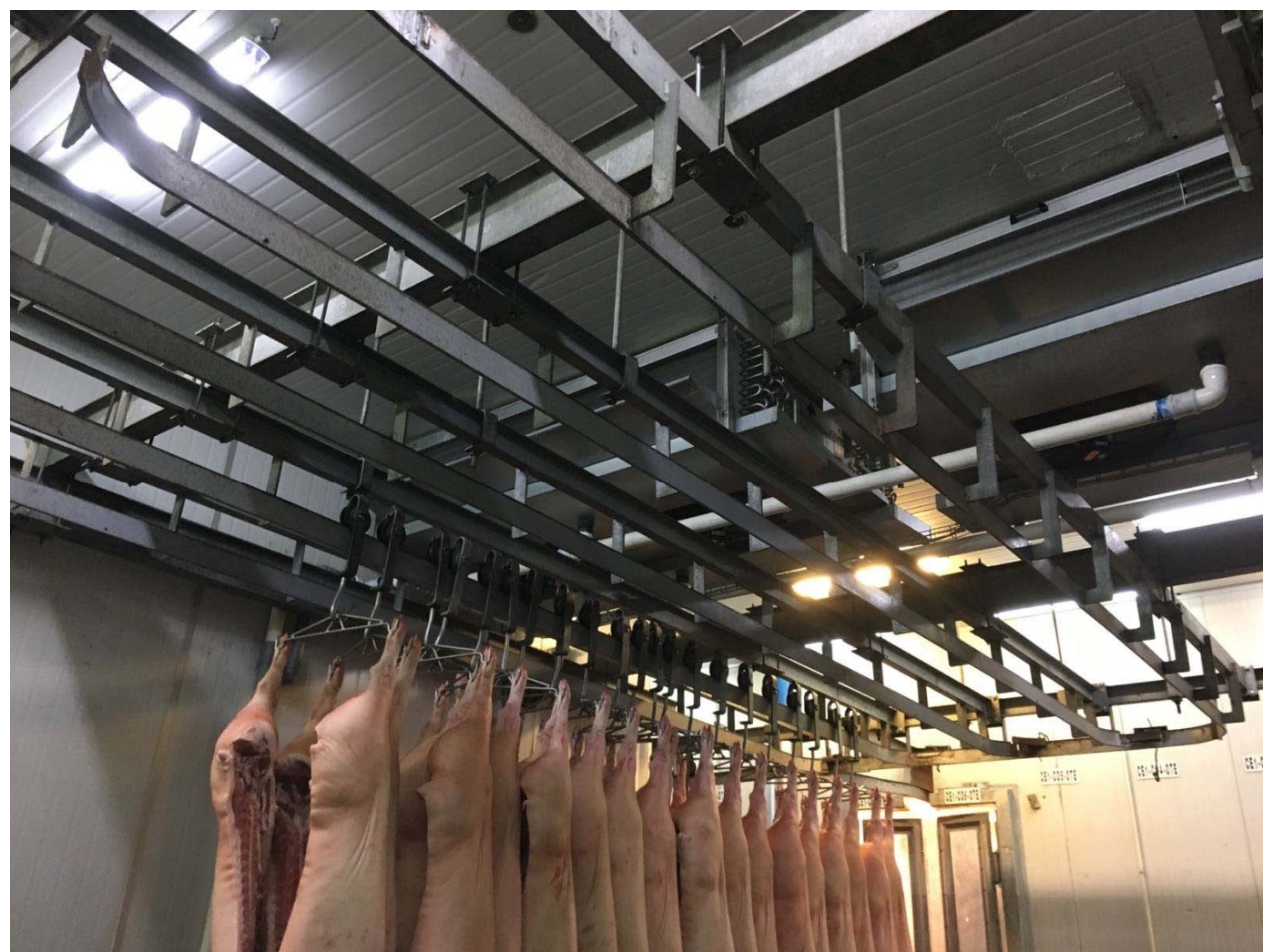
- Airway profile made of S-275-JR steel plate with galvanized coat. AISI - 304 Stainless Steel flat track profile is also available.
- The standard plate for cattle will be 100x12 mm and 60x12mm for pigs.
- Track moments of inertia equal to 33.5 cm<sup>4</sup>
- Section of the track designed to allow the rolling of the transport carts on it and at the same time facilitate the assembly of the elements necessary to hold it.
- The fastening of the track to the support structure beam can be done either with a hanger made of UPN-60x30 S-275-JR steel profiles together with an angle for fixing to the beam, depending on the installation.
- Joining elements of the hangers to the support beam made of galvanized S-275-JR steel or AISI - 304 Stainless Steel.
- Zinc plated hardware.
- Rolling dimension: In function of the installation



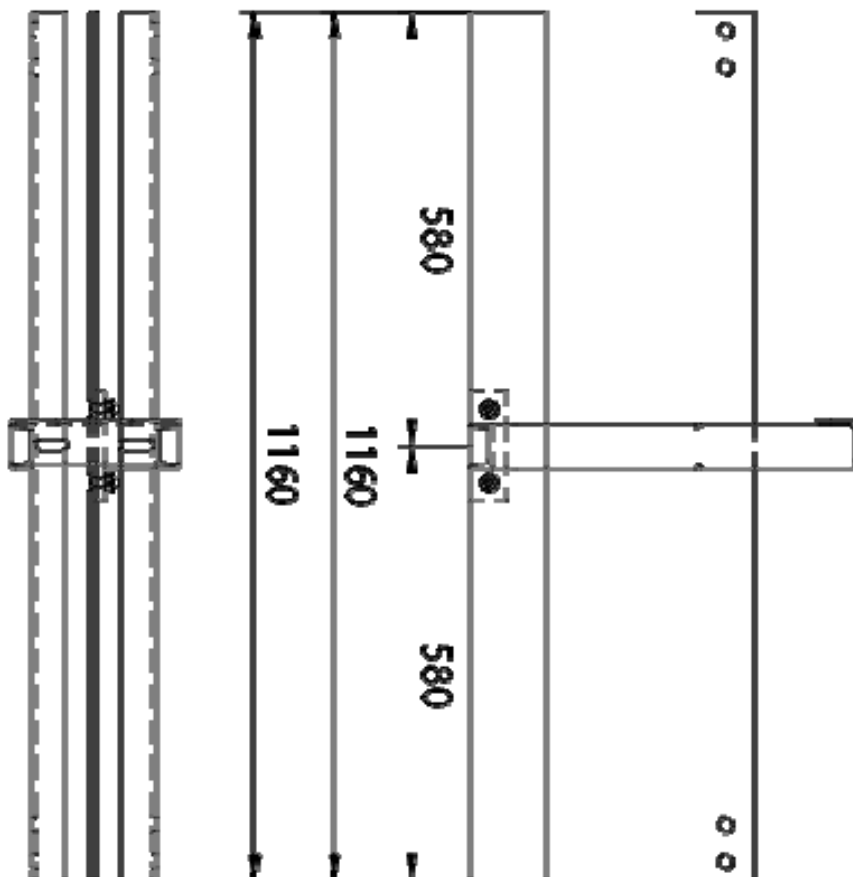
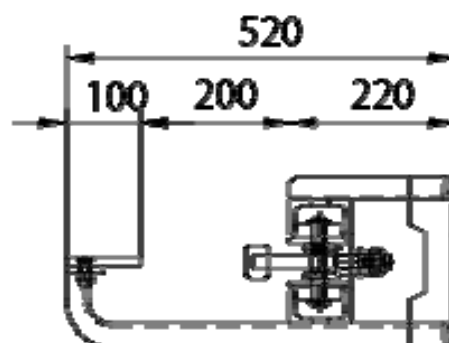
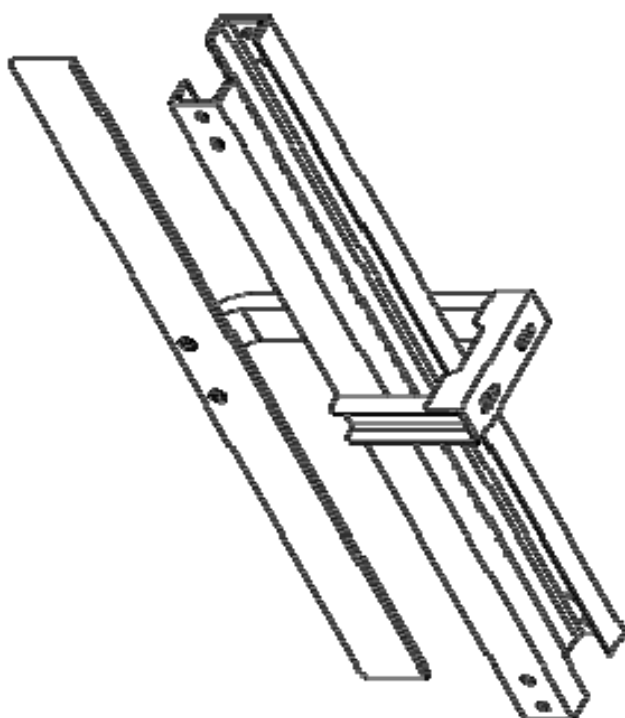
## Legal Requirements:

- Screws made according to DIN regulation
- Hangers alloy according UNE 38252 1st review regulation







[illegible]

