

## M102212 CATTLE FIXED PLATFORM

### Description:

Workstation at height designed for beef slaughter work. It consists of a fixed stainless steel platform, which has a ladder on one of the sides for access.

The platform is prepared for the installation of hand basins and knife sterilizers, as well as the necessary tools to carry out the operation.

The dimensions of the platforms may vary depending on the client, since they can be made:

- Individuals
- Double
- Collective

It is made of AISI 304 stainless steel, it mounts a 40 mm light non-slip polyester grid. This floor allows total operator safety, reduces fatigue and facilitates cleaning.



### Models:

- Bleeding Platform
- Legs and horn cutting platform and esophagus knotting
- Bottom platform
- Chest opening platform
- Inspection and weighing platform

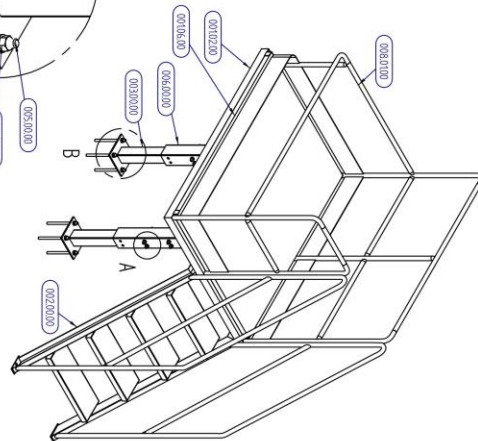
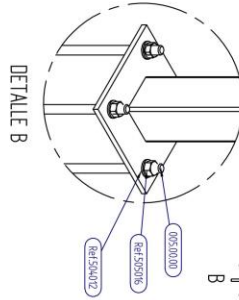
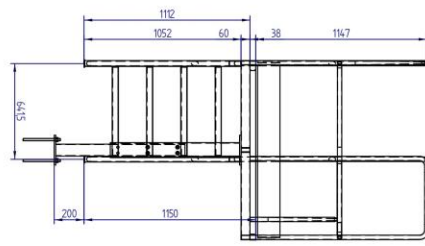
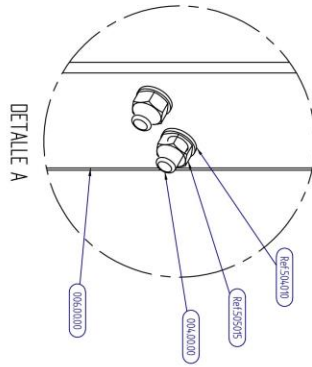
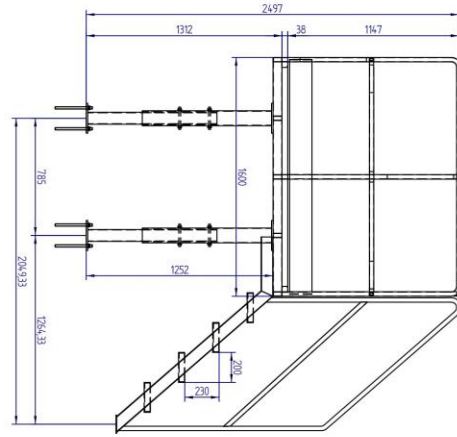
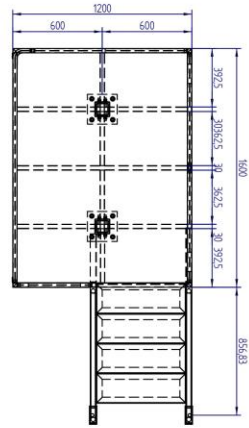
*Note: Although they can be added to the product budget, the following items are not included in the standard price:*

- Handwash
- Sterilizer
- Tool required for operation
- Soil in the case of being with mortar and resin

### Technical Data:

- Made entirely of AISI 304 stainless steel
- They can be made at different heights, it is equipped with height-adjustable legs, a ladder in accordance with European regulations and safety rails, and also a polyester mesh floor.
- Frame in tube 60x40x2
- 30x2 round tube railing
- Skirting board using 5mm thick stainless steel plate
- Ladder through tube 60x40x2 and angle of 40x40x4
- Frontal protection against rubbing with meat by means of a 100x10 polyethylene bar
- Legs made of 100x100x4 and 80x80x3 tube finished in 200x200x10 plates





MODIFICACION	

	REVISION		DESIGNACION	OBJETIVO/COMENTARIOS		Material: Riel de acero Estructura: Estructura Fabricacion: MECANOVA
	Titulo: Versión: Fecha:	Proyecto: Cliente: Ubicación:	Plataforma para Sangrado Plataforma de sangrado MANTENIMIENTO	Modificado: 0012000000000	Firma:	









